

# Arizona State University

## Utility GIS Web Viewer

### User Instructions

#### ASU GIS Portal

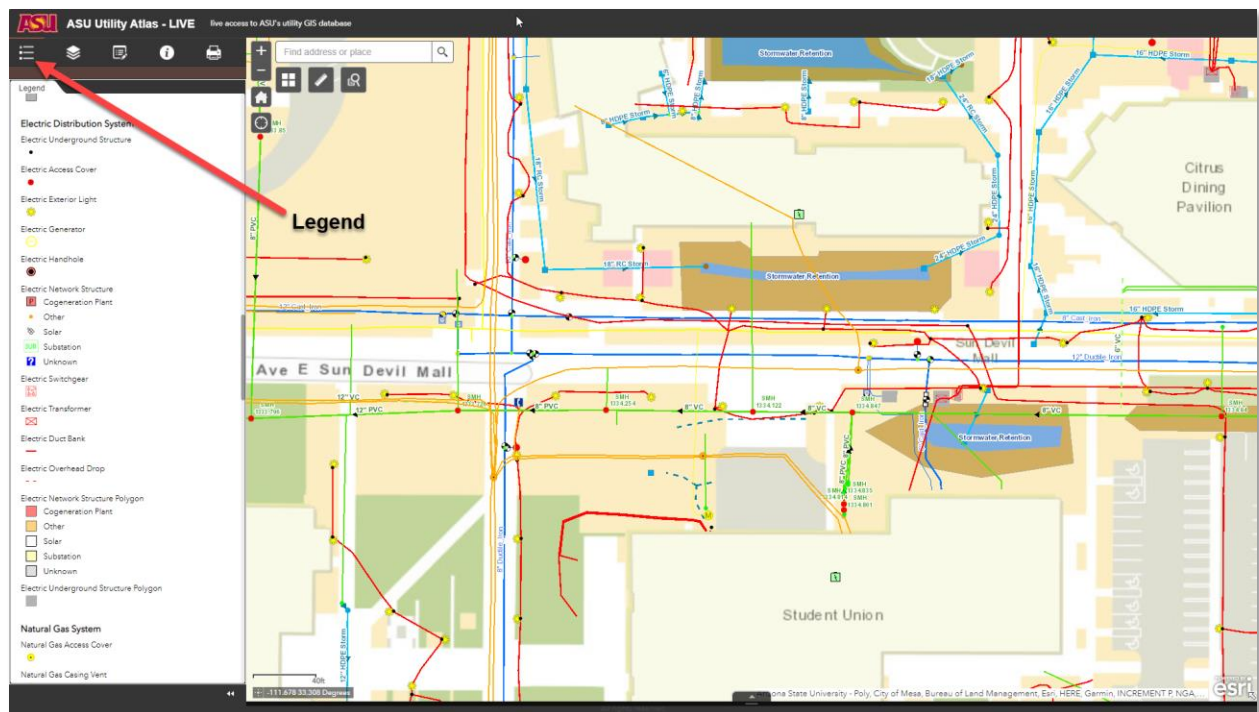
The ASU GIS Portal hosts the most up to date utility GIS information and associated photos, video, record drawings, and inspection reports. To provide access to this information CDM Smith has configured a web application for ASU staff. It is envisioned that the ASU Portal will be used to build more field and desktop applications that provide access to the utility data.

#### ASU Utility Atlas – LIVE

The ASU Utility Atlas-LIVE web application provides users access to the latest utility GIS information. Users can toggle layers on and off to isolate specific utilities and they can provide mark-ups on the map to facilitate updates to the utility GIS layers.

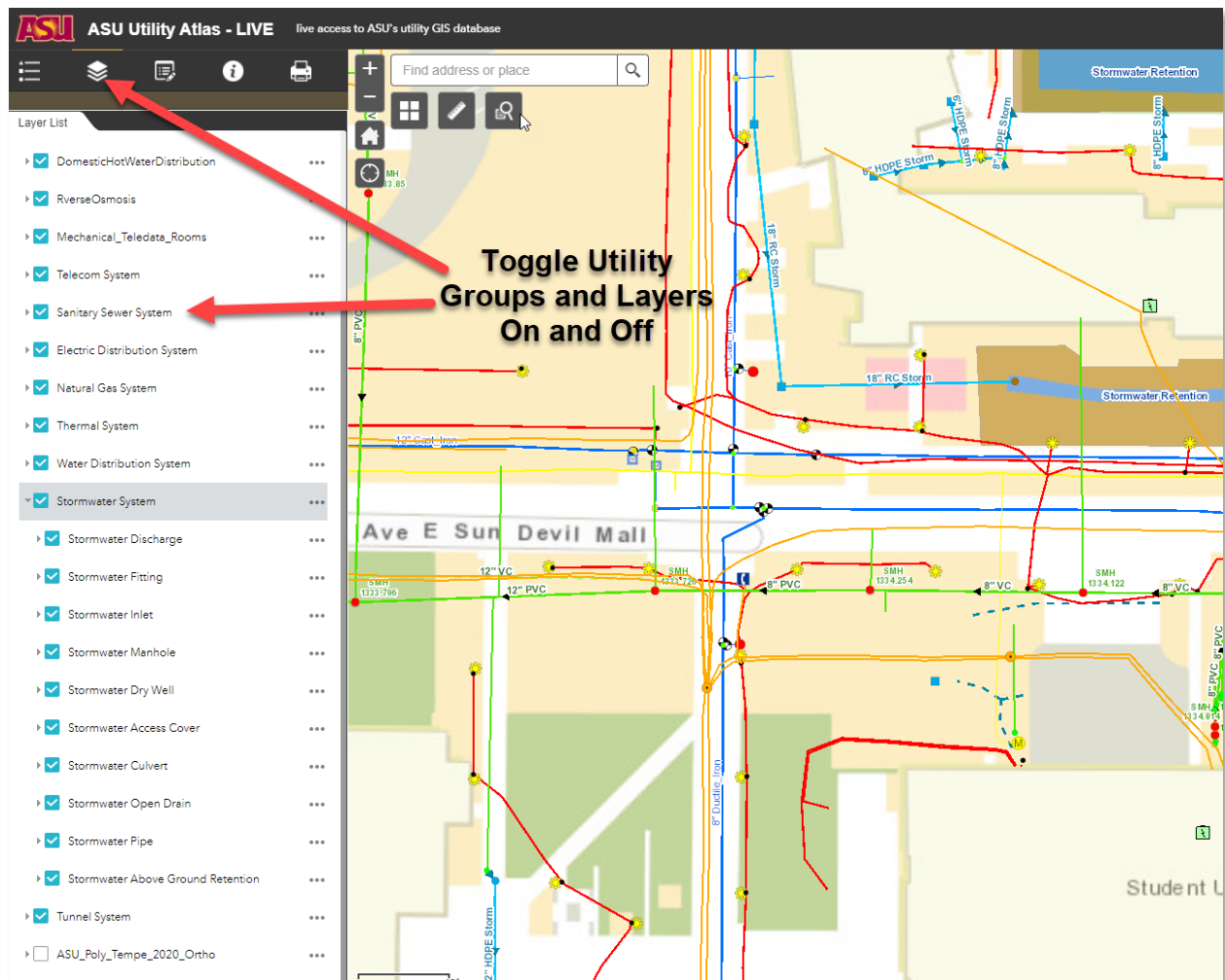
#### Legend

When accessing the utility atlas web application users will see all the utilities displayed. Users can view the Legend to determine the color schemes and symbology that is used to represent the utility layers.



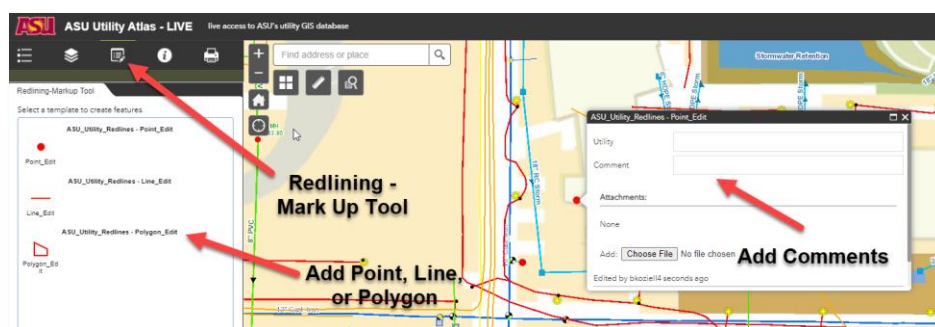
## Layer List

When accessing the utility atlas web application users will see all the utilities displayed. Users can toggle layers and utility groups on and off to focus on a single utility.



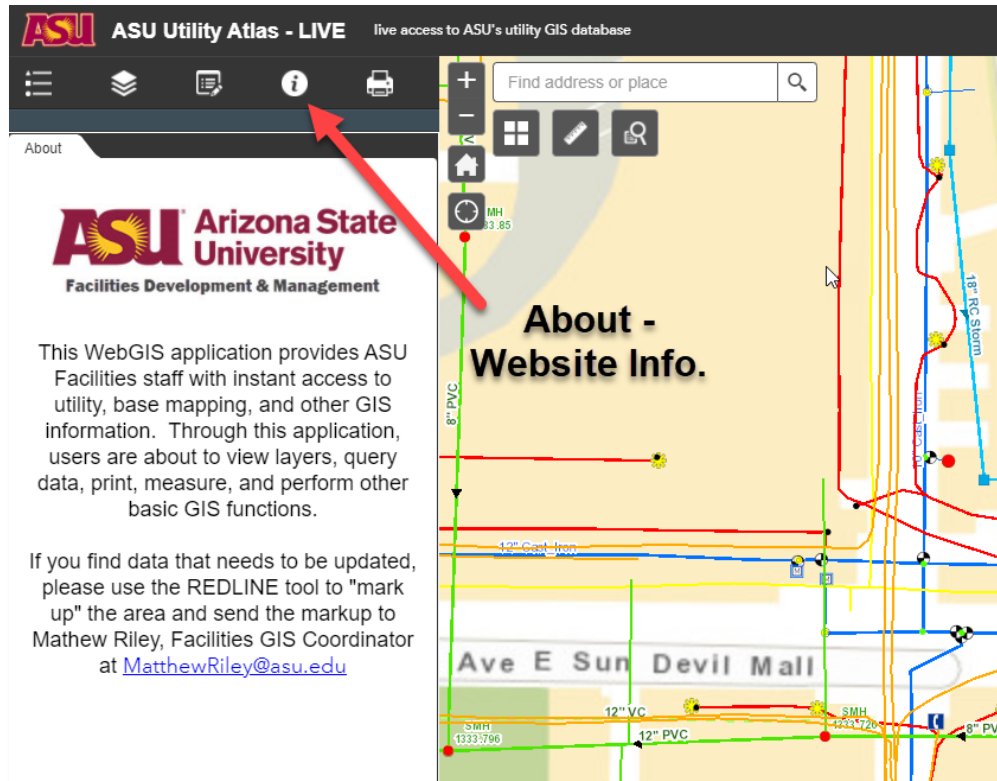
## Redlining and Mark-Up

Users can provide feedback to the ASU GIS Utility Database Manager using the Redlining – Mark Up Tool. Users can add lines, points, and polygons to the map and attach photos or other documents to help facilitate updates to the utility GIS layers.



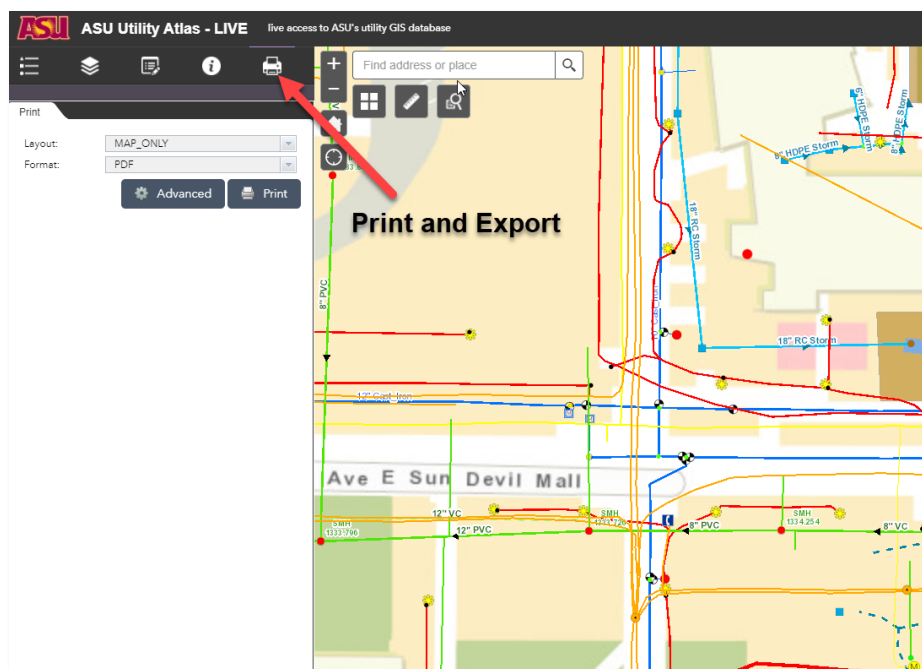
## About – Info

Contains information About the website. This will evolve to include more meta-data.



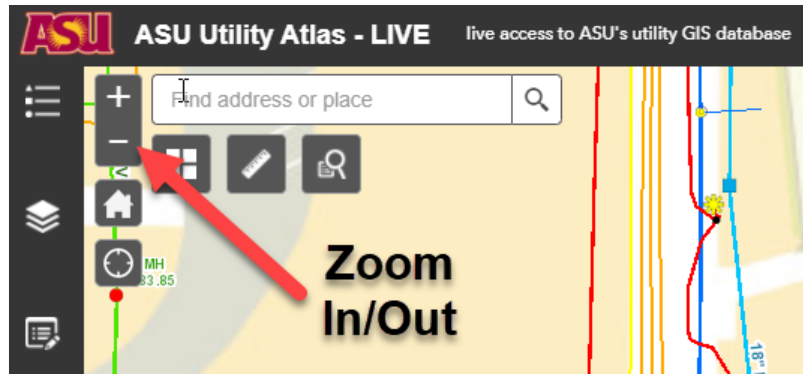
## Print and Export

Users can Print and Export maps to multiple formats.



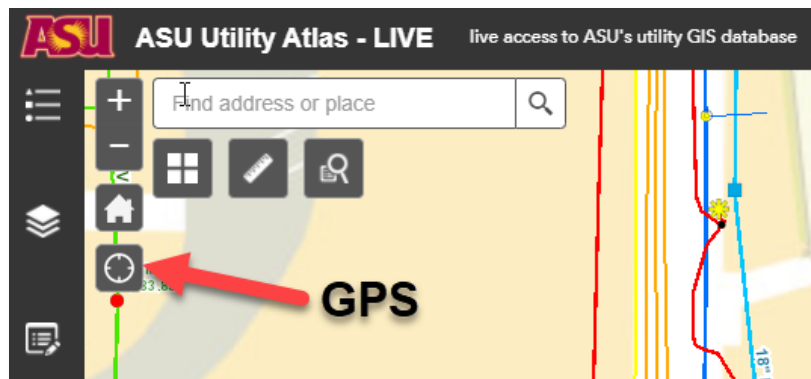
Zoom in Out

Can also use mouse scroll.



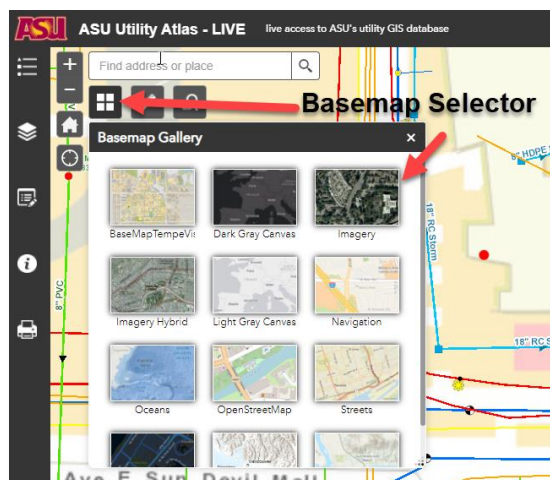
GPS

Toggle on and off when in field or accessing website on mobile device.



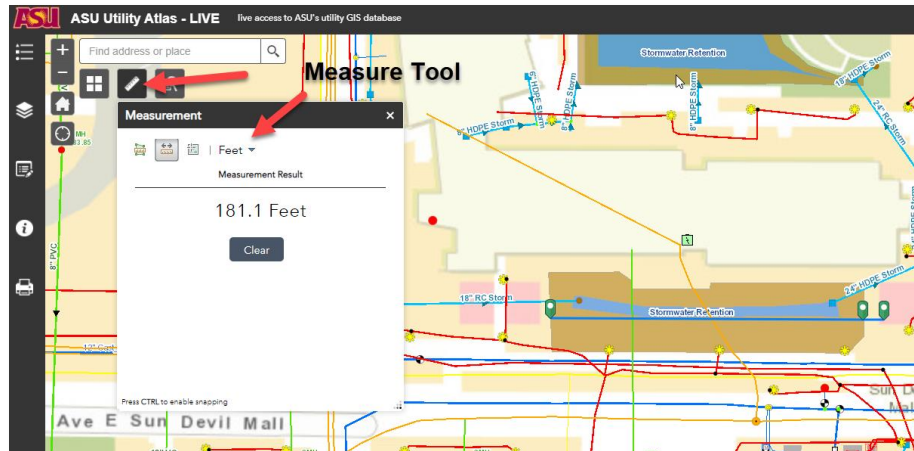
Basemap Selector

Change between multiple different basemaps.



## Measure Tool

Measure linear distances and areas.



## Query

Query, zoom to, and export data for a dry well or backflow. It is envisioned that multiple other queries will be built based on user feedback.

